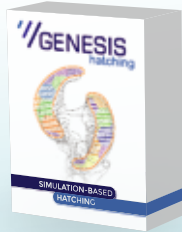


## Features

The new GENESIS hatching preprocessing software includes:



Import of any part and corresponding support structure in the common file format.

Fast slicing and preview of every part contour.



**Conventional hatching** strategies like, islands and stripes.

**Simulation-based hatching** enables reduced distortion and better part quality.



Fully automatic geometry-adapted identification of critical regions and parameter adaption.

Visualization of every detail of the hatching vectors and contour paths. Export of data in the build-job format like CLI-file.



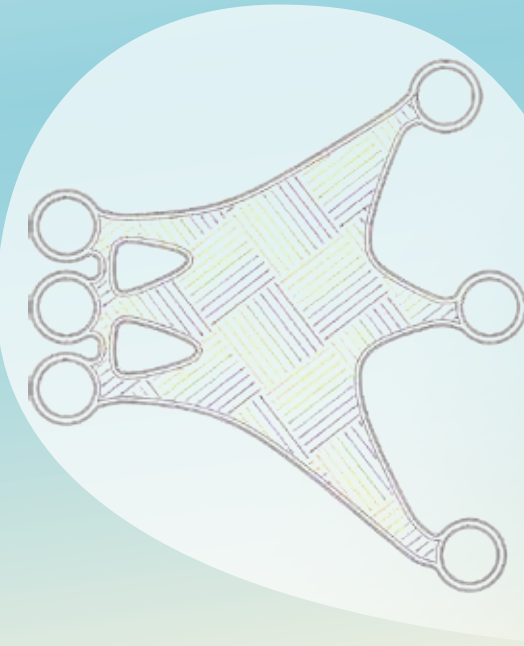
## Conventional hatching

Several conventional hatching strategies are available:

- Uni- & bidirectional
- Linear hatching
- Islands / Checkerboard
- Stripes strategy

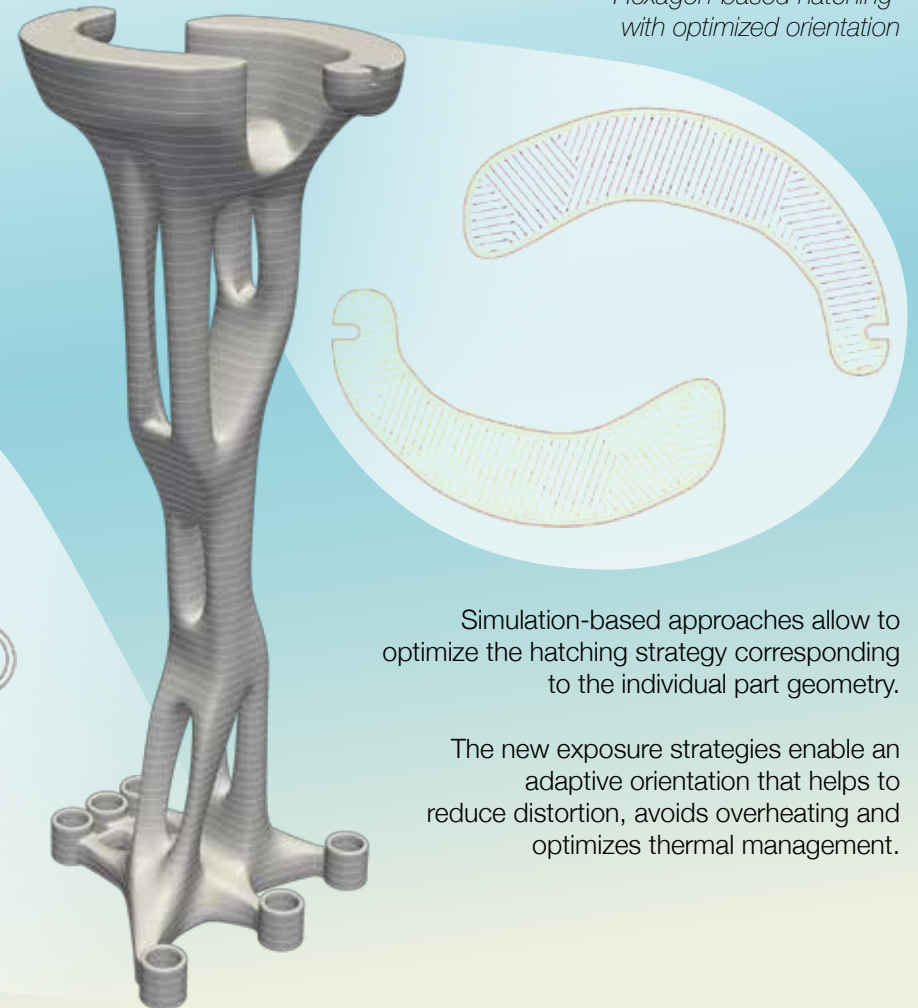
Additional feature:  
Optimized exposure sequence according to gas flow.

*Checkerboard strategy with contour scan*



## Simulation-based hatching

*New strategy example:  
Hexagon-based hatching with optimized orientation*



Simulation-based approaches allow to optimize the hatching strategy corresponding to the individual part geometry.

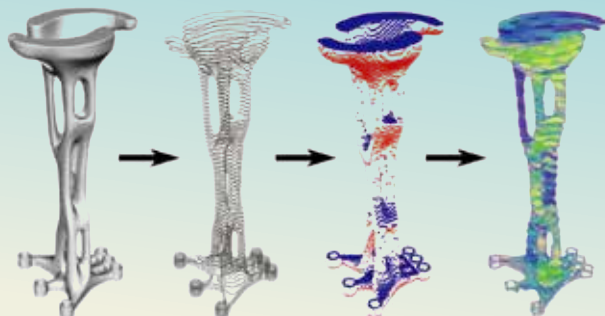
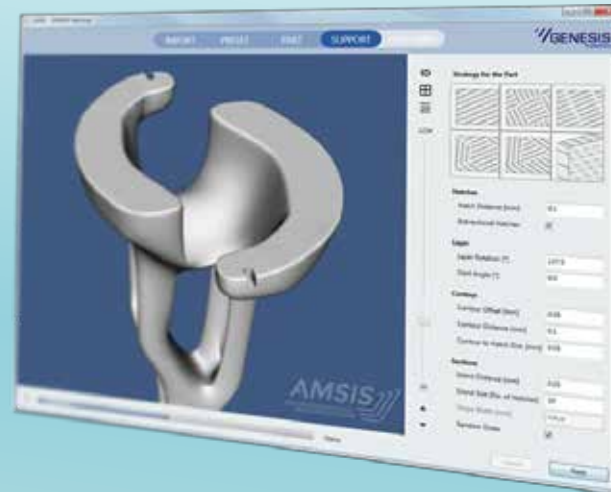
The new exposure strategies enable an adaptive orientation that helps to reduce distortion, avoids overheating and optimizes thermal management.

## SIMULATION-BASED HATCHING

### Preprocessing Software

GENESIS hatching is a knowledge-based software for creating hatching strategies for metal additive manufacturing processes.

GENESIS hatching enables you to generate layer data and part contours from the 3D geometry, automatically analyze the component with simulations and create optimal hatching strategies.



### Contact

AM SIS GmbH  
Bremen, Germany

info@amsis.de  
www.amsis.de

©2018 AM SIS GmbH



GENESIS  
hatching

New preprocessing software for  
metal additive manufacturing

www.amsis.de